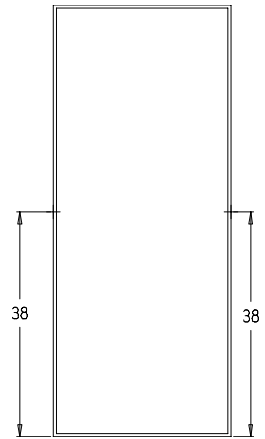
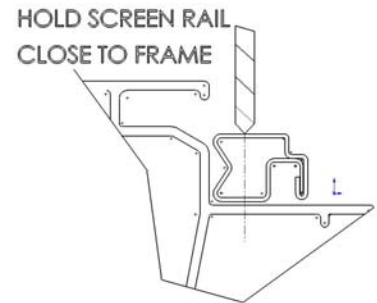


Screen Retainer Pin Installation Instructions

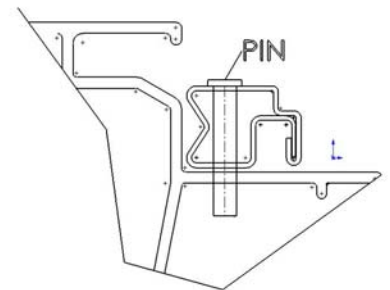
1. Tools needed: Pencil, tape measure, 3/32" drill
2. Install the screen in the door and hold in place with the top and bottom retainers
3. From the bottom of the screen, measure 38" along one side and make a pencil mark.
4. From the bottom of the screen again measure 38" along the other side and make a pencil mark.



5. While holding screen rail close to frame, drill a 3/32" diameter hole through the face of the screen rails and into the door frame behind it, at one of the 38" marks made in steps 2 and 3.



6. Insert one of the 3/4" pins into the hole drilled in step 5 to secure the position of the screen rail. Install the retainer bead for that side to lock the pin in position.



7. Repeat steps 5 and 6 on the opposite screen rail to complete the installation