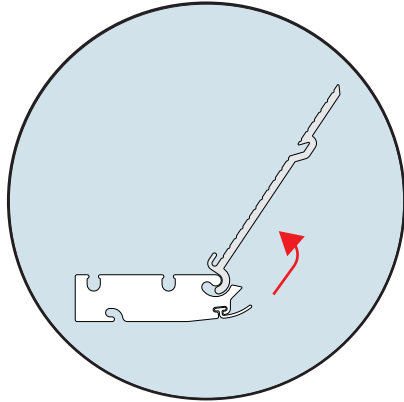




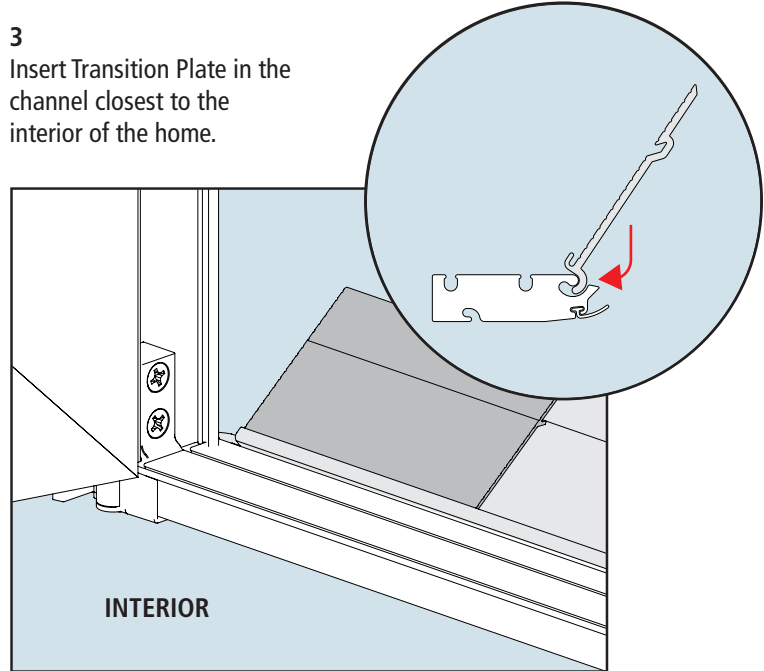
Platinum Transition Plate Replacement

1
Open door and engage
Click N Hold feature.

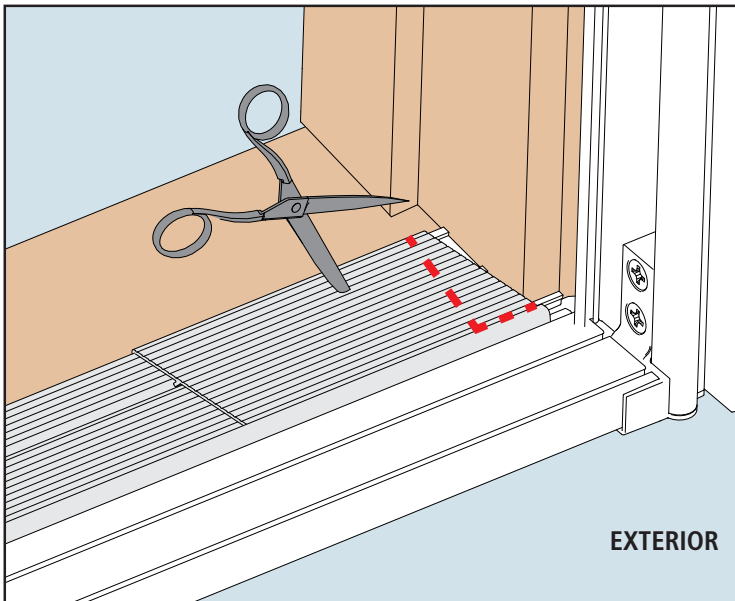
2
Remove the old Transition
Plate from door by lifting
upwards until it unhooks
from bottom sill.



3
Insert Transition Plate in the
channel closest to the
interior of the home.



4
For a tailored fit, trim both sides of the Transition Extenders.
Remove the Transition Extenders if needed (optional).



5a Remove tape backing.
5b Position Transition Plate.

