

Part Number: 202220677

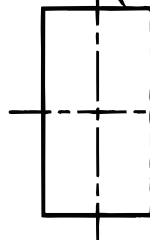
DRILL TEMPLATE

BACKSET 1-1/4" DRILL 2- ϕ 3/8"

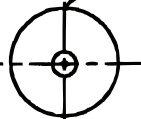


FOLD HERE

FOLD IN TAB



DRILL ϕ 9/16"



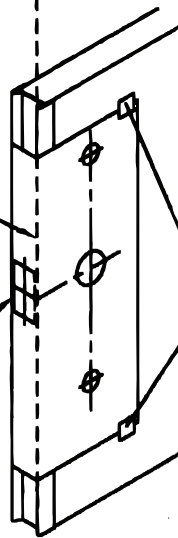
DRILL 1/8" PILOT HOLE ON ALL HOLES

INSTALLATION STEPS

- 1) Determine Hinge Side of Door
- 2) Fold Tab in on perforation
- 3) Fold Template and tape to inside of door
- 4) Drill holes using 1/8" pilot holes

ALIGN DASHED LINE OF DRILL TEMPLATE WITH INSIDE CORNER OF DOOR

FOLD IN TAB TO ALIGN VERTICALLY WITH EXISTING CUTOUT



TAPE AS SHOWN

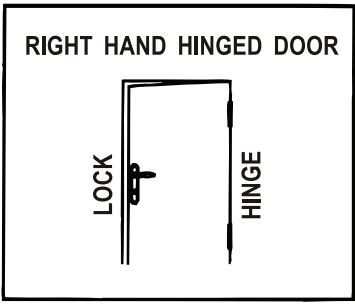
TO INSIDE OF DOOR

DRILL HOLE STRAIGHT THROUGH DOOR



Part Number: 202220677

DRILL TEMPLATE

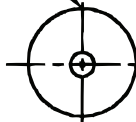


DRILL 2- ϕ 3/8" 1-1/4" BACKSET

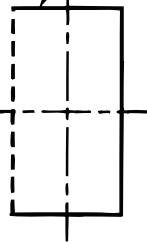


FOLD HERE

DRILL ϕ 9/16"



FOLD IN TAB



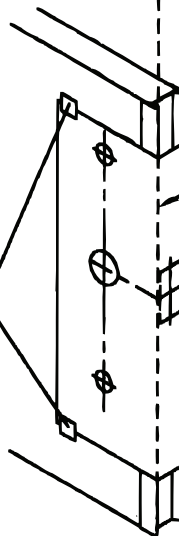
DRILL HOLE STRAIGHT THROUGH DOOR

INSTALLATION STEPS

- 1) Determine Hinge Side of Door
- 2) Fold Tab in on perforation
- 3) Fold Template and tape to inside of door
- 4) Drill holes using 1/8" pilot holes

DRILL 1/8" PILOT HOLE ON ALL HOLES

TAPE AS SHOWN TO INSIDE OF DOOR



ALIGN DASHED LINE OF DRILL TEMPLATE WITH INSIDE CORNER OF DOOR

FOLD IN TAB TO ALIGN VERTICALLY WITH EXISTING CUTOUT