



Multi-Point Latch Assembly Replacement

Instructions for Secure Elegance

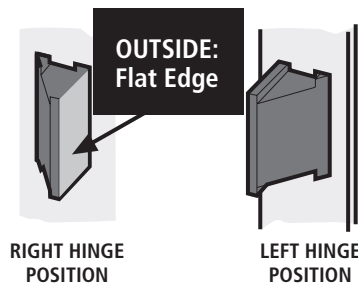
202221034

BEFORE YOU BEGIN

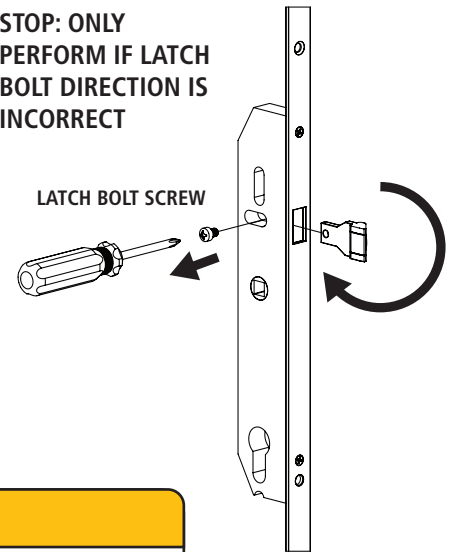
Ensure your new multi-point latch assembly's latch bolt is facing the correct direction. The angled side should face towards the inside of your home. If the latch bolt does not need to be flipped, skip to step 1.

If the latch bolt is not facing the correct direction, remove the latch bolt screw. This is visible on the side of the latch assembly. Once this screw is removed, pull the latch nose out and rotate 180 degrees. Insert latch nose back and re-fasten screw.

NOTE: A Phillips screwdriver will be needed to flip the latch bolt.



STOP: ONLY PERFORM IF LATCH BOLT DIRECTION IS INCORRECT



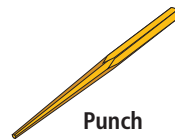
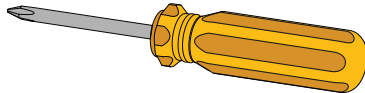
Recommended Tools

You will need a few tools to help with your multi-point hardware replacement.

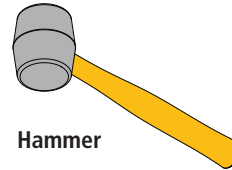


1/8" Allen Wrench

#2 Phillips Screwdriver



Punch

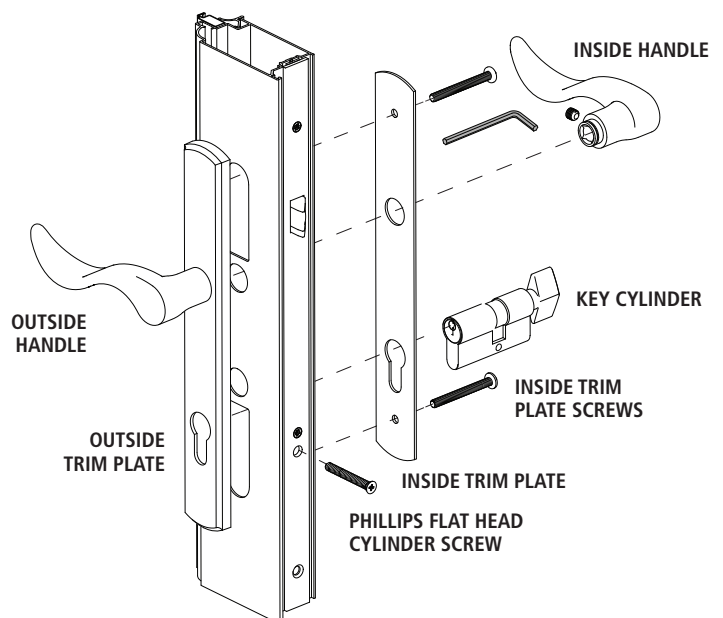
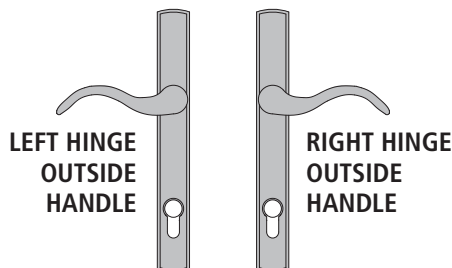


Hammer

1

REMOVE HANDLE ASSEMBLY

- With the door open, use an 1/8" Allen wrench to loosen the set screw on the inside handle, then remove the inside handle.
- Using a Phillips screwdriver, remove the screw that runs through the latch assembly into the key cylinder. Once screw is removed, remove cylinder and set aside.
- Using a Phillips screwdriver, loosen the screws on the inside trim plate, then remove both the inside and outside trim plates. Outside handle will remove with the outside trim plate.



For any questions, or additional support,
CONTACT OUR CUSTOMER CARE TEAM
at LARSONdoors.com or 888-483-3768

2

REMOVE THE MULTI-POINT LATCH ASSEMBLY

a. With the door open, use a Phillips screwdriver to remove the screws from the multi-point latch assembly, then remove the multi-point latch assembly.

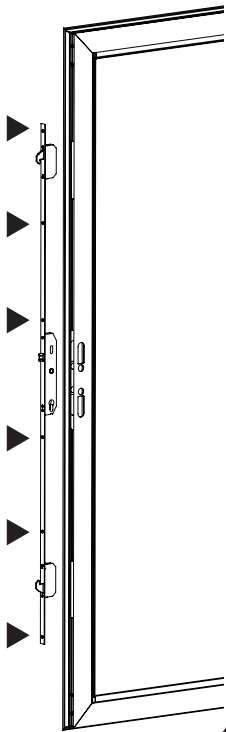
b. Using a hammer, punch, or file, flatten any burrs or raised metal left by the removed screws.

NOTE: DO NOT remove the star head screws.

REMOVE



DO NOT REMOVE



3

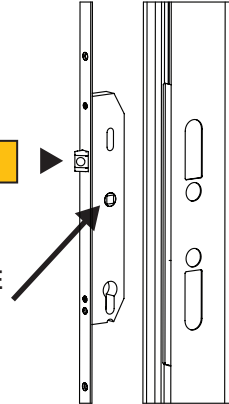
INSTALL NEW MULTI-POINT LATCH ASSEMBLY

Place the multi-point latch assembly back into the door. Lift up the latch assembly, align the square hole in the multi-point latch assembly with the round hole in the face of the door.

If screw holes do not align, center-punch and pre-drill six 1/8" holes as needed.

UP

HANDLE HOLE

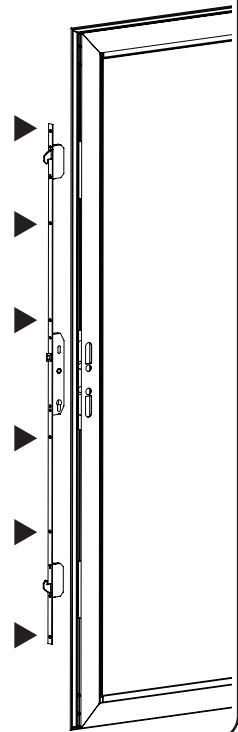


4

SECURE THE MULTI-POINT LATCH ASSEMBLY

While continuing to lift up on the multi-point latch assembly, use a Phillips screwdriver to secure the six #8 x 7/16" Phillips flat head screws.

Note: DO NOT OVERTIGHTEN AS THIS MAY CAUSE THE HARDWARE TO BIND.



5

RE-INSTALL HANDLE ASSEMBLY

a. If outside handle is already assembled, skip to step b. In order, first assemble the outside handle, followed by the T-bushing, outside trim plate, and flat washer.

Slide the D-shaped clip onto the groove in the handle post, securing the outside handle in place.

Insert the spindle through the D-shaped clip into the outside handle.

Tighten the handle set screw with Allen wrench.

b. Insert the exterior handle assembly through the square hole in the multi-point latch assembly. Verify that the handles are facing the correct way.

In order, first assemble onto the spindle the inside trim plate, followed by the T-bushing, and interior handle.

Hold the handles tightly together and tighten the inside handle set screw.

c. From the interior, attach the assemblies by threading two Phillips pan head trim plate screws through the holes in the inside trim plate and into the outside trim plate. Tighten screws to secure the trim plates in place.

d. From the interior, insert the key cylinder through the hole in the inside trim plate and then through the lock body, with the turn knob on the inside of the door.

e. Secure the key cylinder in place with the Phillips key cylinder screw.

